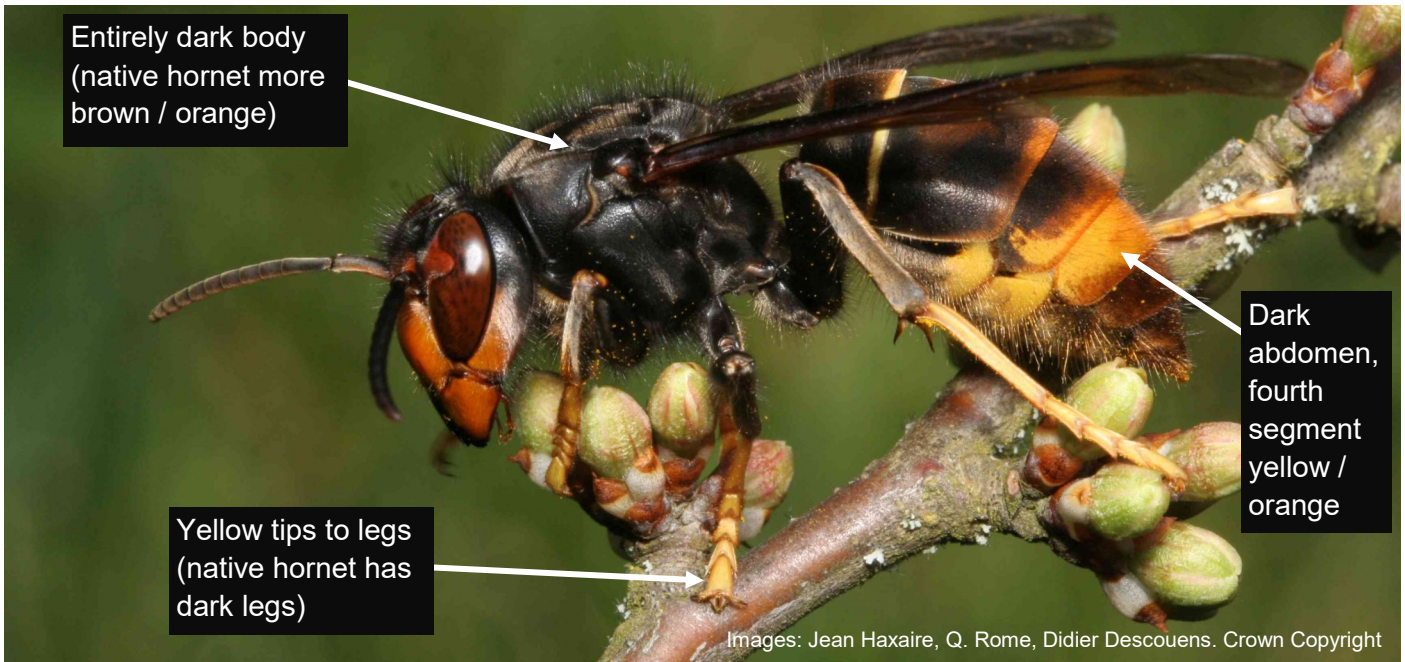


# Have you seen this insect?

## Asian hornet, *Vespa velutina*

### What is it?

A highly aggressive predator of native insects that poses a significant threat to honey bees and other pollinators. Originally from Asia, in 2004 this invasive non-native species was accidentally introduced to France where it has spread rapidly and into neighbouring countries. Since 2016 a number of sightings have been recorded in the UK.



Slightly smaller than the native European hornet. May be confused with other species, shown below in actual size for comparison.



Asian hornet



European hornet



Median wasp



Hornet mimic hoverfly



Woodwasp

### Where might I see it?

May be seen on flowering plants, around beehives, around rotting / fermenting fruit and protein, and at street markets attracted by sweet fruit and fish stalls. Active February to November across England and Wales.

**This insect stings, do not disturb an active nest.**

### Please report sightings immediately with a photo:

- with the iPhone and Android recording app: [Asian Hornet Watch](#)
- online at: [nonnativespecies.org/asianhornet](http://nonnativespecies.org/asianhornet)
- by email: [alertnonnative@ceh.ac.uk](mailto:alertnonnative@ceh.ac.uk)

Find out more and report a sighting:

